



SECURSAT®
Build your security

Intersectoral report 2025

Banks and retail sectors compared



comunicazione@secursat.com



www.secursat.it

Introduction

The inaugural cross-industry security report examines millions of log files associated with security technologies implemented at facilities within the banking and retail sectors, overseen by our SOC 50518:2020.

This document seeks to perform a comprehensive analysis of the data generated by Secursat technologies, emphasizing the potential of a technological security model adept at managing risks and reports both remotely and on-site. It aims to leverage authentic security governance as a guiding principle for development within the sector. The proposed data analysis pertains to the reports and criminal incidents recorded during the years 2023, 2024, and 2025 by Secursat's 24/7 information systems, which are distinguished by business continuity ensured through the operation of two separate Security Operation Centers located in Milan and Asti, as well as a digitalized infrastructure housed within a Tier IV data center.

In an effort to optimize internal processes, the document compares the collected data with supplementary information provided by specialized sector organizations, including the Italian Banking Association's "Intersectoral Report on Predatory Crime 2024."

The report articulates, "The 2024 Intersectoral Report on Predatory Crime serves as a valuable resource for enhancing our comprehension of criminal modus operandi, assessing the repercussions of harm inflicted on various economic sectors, and identifying the most vulnerable territorial regions." In this context, Secursat aims to utilize this collective information in a study that has immediate practical relevance in offering essential support for formulating strategies to prevent and address criminal activities, benefiting both Secursat and all relevant economic stakeholders.

PREPARED BY
SECURED

Statement of Work

The scope of work is delineated into three essential points that direct the analysis through successive phases of data collection and examination.

Immediately:

- **ESTABLISH** a unified, structured database to serve as the basis for consistent, externally comparable internal analysis.
- **COMPARE** Secursat data with the insights from the "ABI Intersector Report 2024" to contextualize company performance within a wider framework.
- **IMPLEMENT** the findings from internal analysis to optimize procedures and improve predictive capabilities, thereby reinforcing a proactive prevention strategy.



Database



The database serves as the cornerstone for analysis, integrating criminal event monitoring with incident reporting via a no-code dashboard utilized by Secursat to synthesize the millions of log files amassed by SOCs.

The reliability of the analysis regarding risk management and the appropriate use of technologies is contingent upon the decision to cross-reference the criminal events documented in the database with the comprehensive information available on the dashboard utilized by Secursat.

The latter introduces a unique aspect: it enables the correlation of each criminal event with the information available on the platforms, facilitating the identification of predictive signals through indicators such as the quantity and type of reports, sensor impact, isolations, and line disconnections.

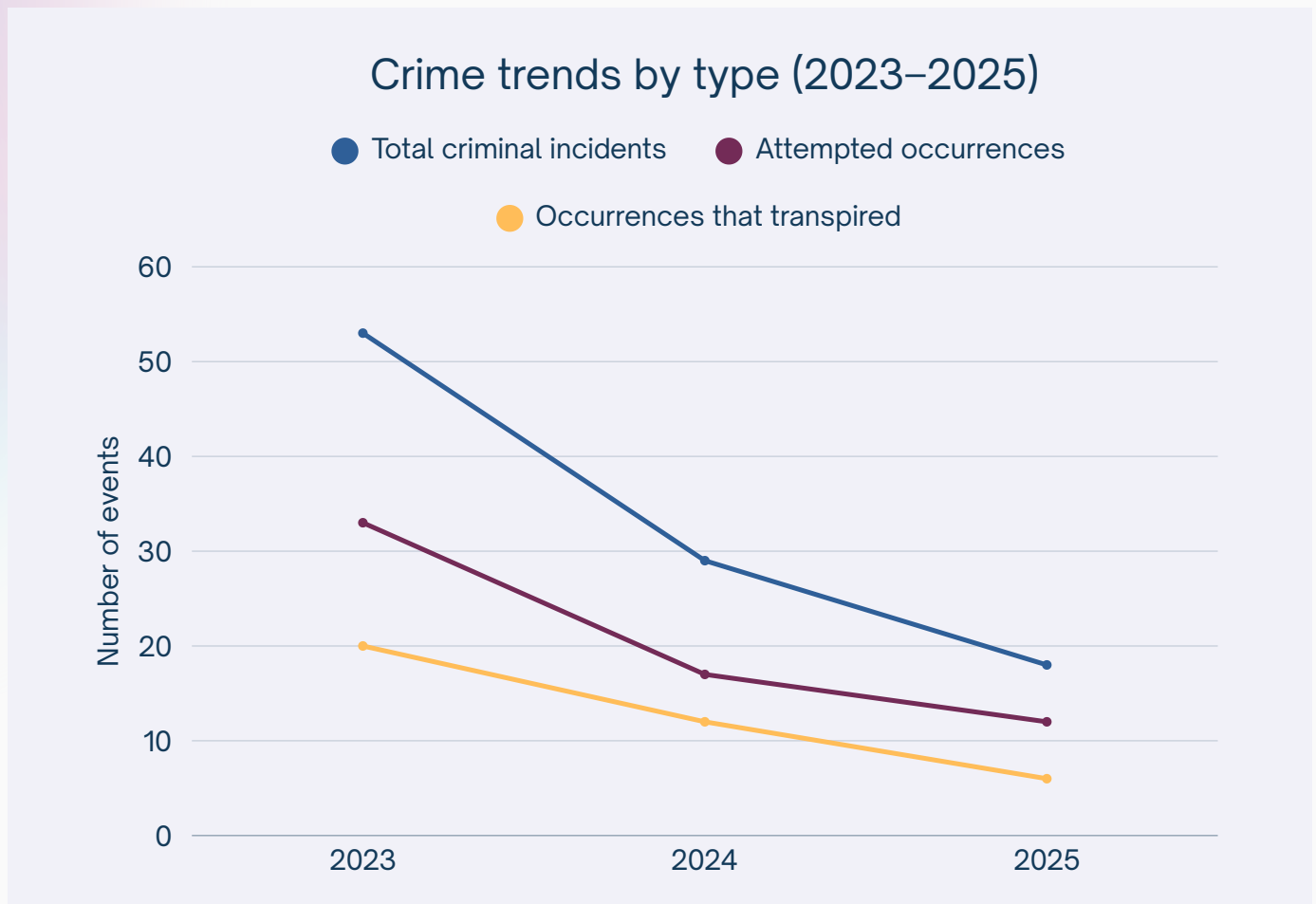
In this manner, the analysis transcends mere event description to serve as a proactive risk management instrument, capable of validating the efficacy of technologies and creating value for prevention.

Overview of the Security Sector



External analysis of the operational conditions derived from the data

The trend in absolute values, along with the structural, operational, and organizational coherence of Secursat's security model, is validated and evidenced by the trend illustrated in the figure, as well as by a reduced number of incidents that occurred in comparison to those attempted.





Overview of the Security Sector

In comparison to 2023, Secursat observed a significant decline in criminal incidents throughout the entirety of 2024.

This downward trend is expected to persist in 2025, supported by results indicating a substantial reduction in criminal incidents, as illustrated in the preceding graph, which accounts for both total events and those that were actual versus attempted.



**2025 data in comparison to 2024 data*

Banking sector assessment



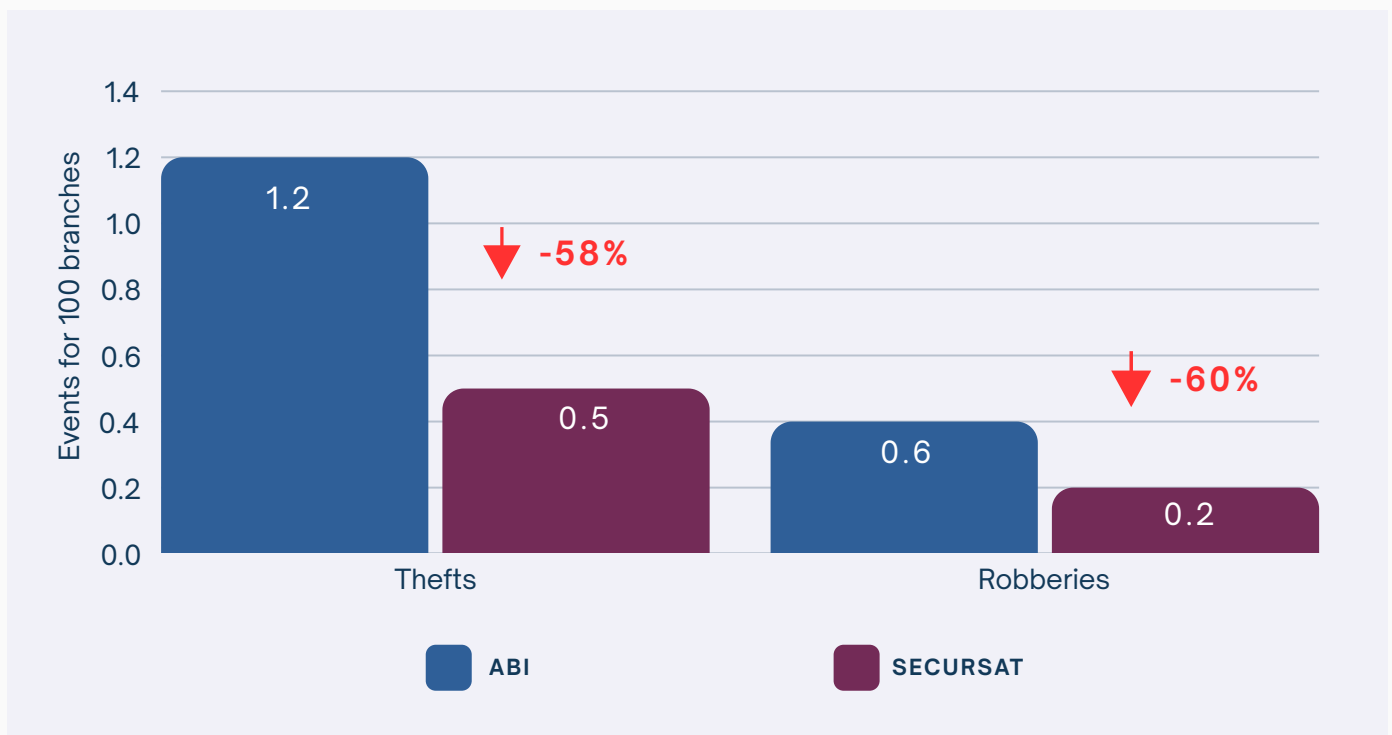
We employed the risk index utilized by the Italian Banking Association as a relative comparison metric for the data, which can be calculated as:

$$\frac{\text{total events transpired}}{\text{total connected sites}} \times 100 = \text{risk index}$$

The graph illustrates the comparative risk indices associated with robberies and thefts within the banking sector.

ABI signifies the national average within the sector.

Secursat presents the values calculated for the monitored clients.



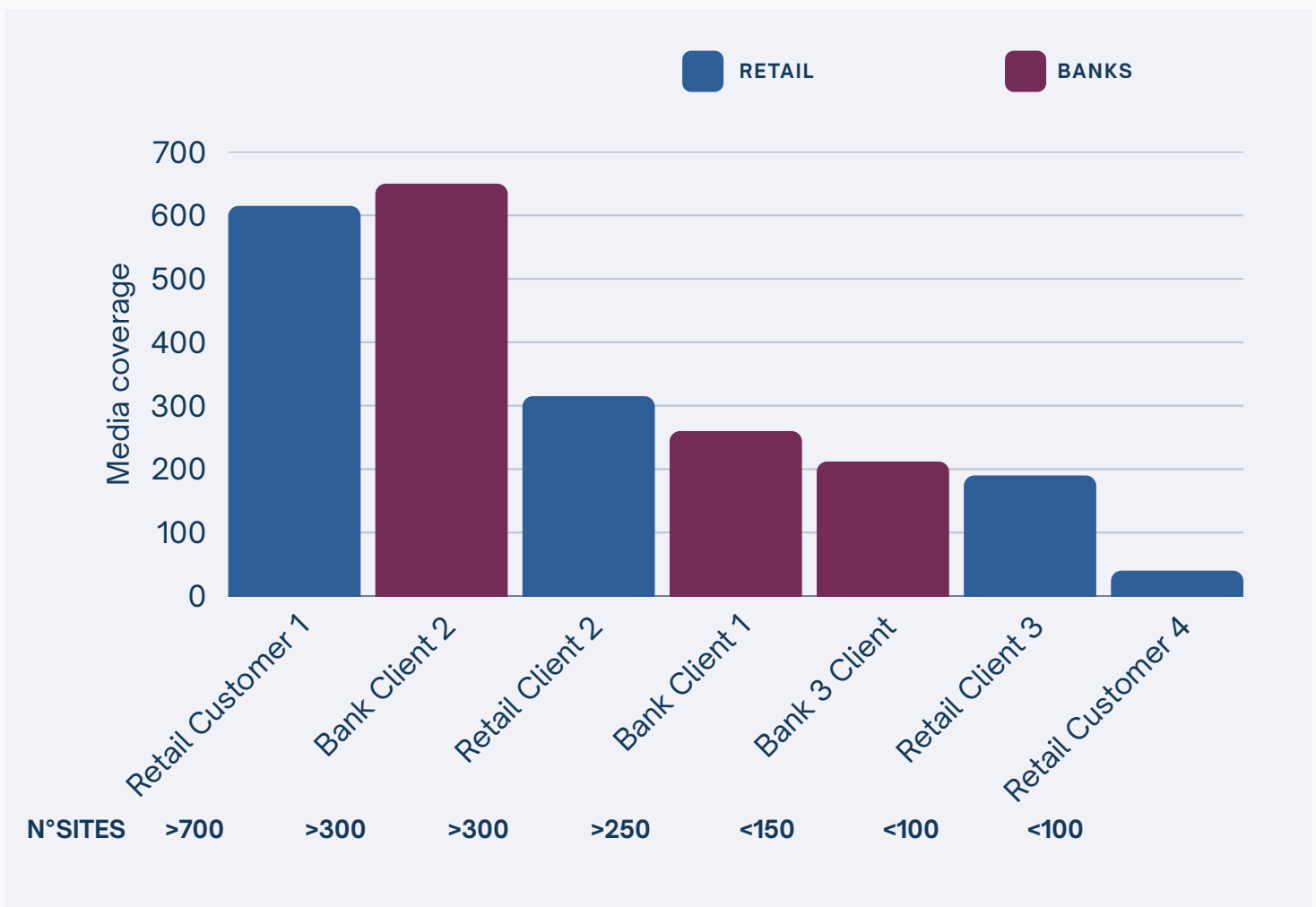
The results indicate that, within the Secursat sample, both robberies and thefts occur less frequently than the national average (ABI), suggesting superior security performance.

Banks and retail sectors compared



THE QUANTITY OF SITES DOES NOT INHERENTLY INFLUENCE THE VOLUME OF REPORTS TO BE MANAGED.

The analysis illustrates how the total number of reports is affected not only by the quantity of sites but also by additional factors, including the management model, technological integration, and operational management.



Data analysis within Secursat

DATABASE

SECURITY
SECTOR

RISK
ASSESSMENT
AND
MITIGATION

Internal analysis of the operational conditions derived from the data.

Crime incidents by region



The analyzed data underscores the concentration of criminal events in Lombardy, particularly within the provinces of Milan, as illustrated in the following graphs.

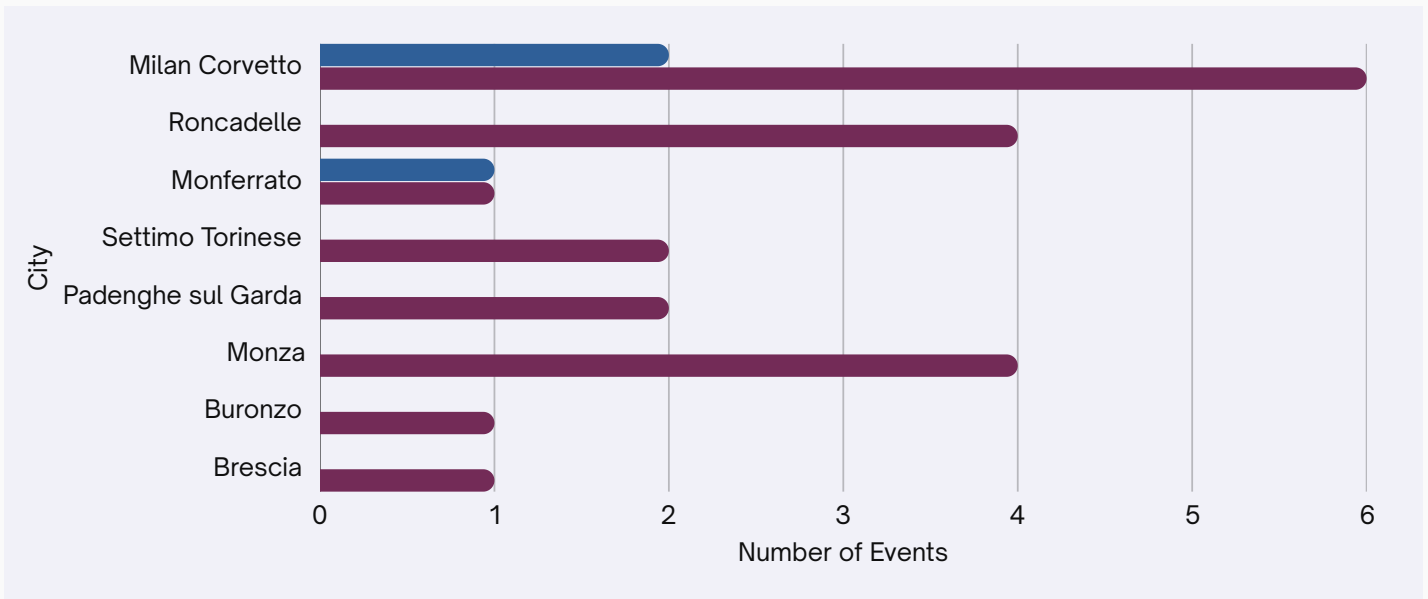
The trend indicates data reported by ABI, which designates Lombardy as the region with the highest risk index while simultaneously emphasizing the areas identified by Secursat as those necessitating the most attention, including the Corvetto district, Settimo Milanese, Roncadelle, and Rubicone.



Crime incidents by region



Areas with the highest incidence of attempted events: thefts versus robberies



Areas with the highest incidence of thefts compared to robberies



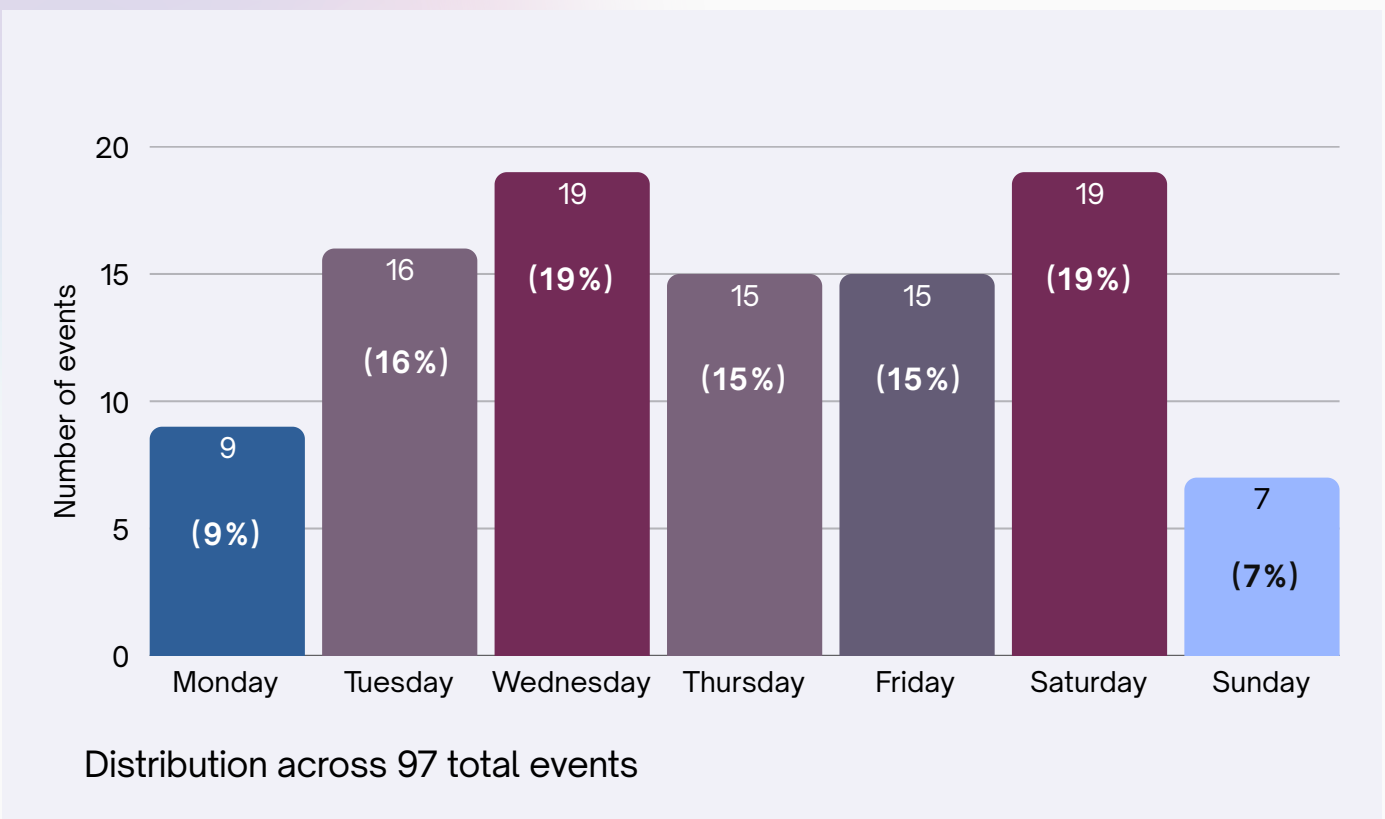
Crime incidents by day



The highest number of criminal incidents is evenly distributed throughout the **central days of the week**, from Tuesday to Saturday.

The peak is observed on **Saturday**, consistent with the varying mobility of individuals over the weekend.

Criminal incidents categorized by day of the week

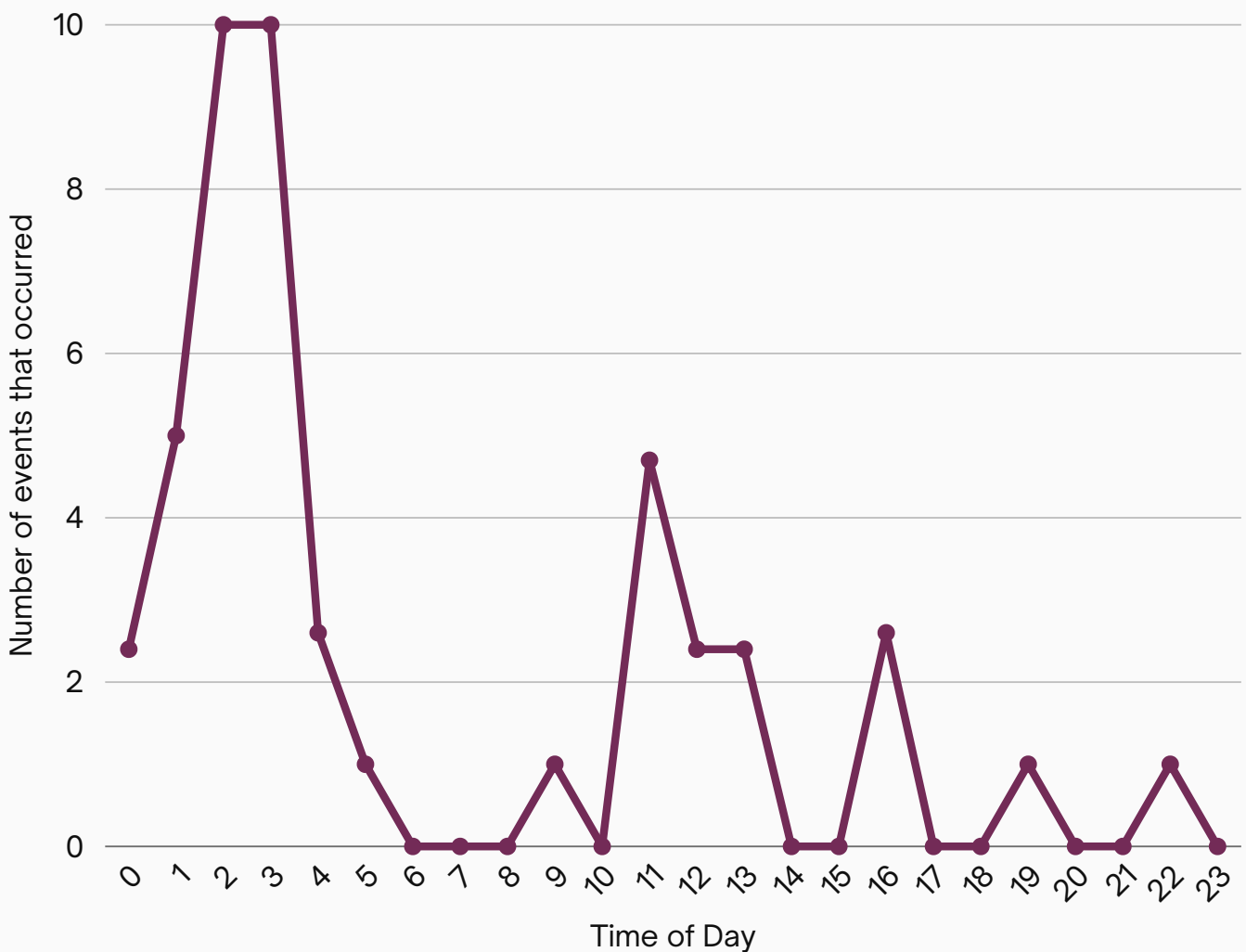


Criminal incidents to date



The graph illustrates the **hourly trend of criminal incidents**, highlighting peaks during the late night, morning, and afternoon hours, specifically around **2:00 am**, **11:00 am**, and **4:00 pm**, respectively.

This enables us to adjust the intensity of focus directed towards the most sensitive time slots, thereby enhancing our ability to apply logic in risk prediction and prevention.



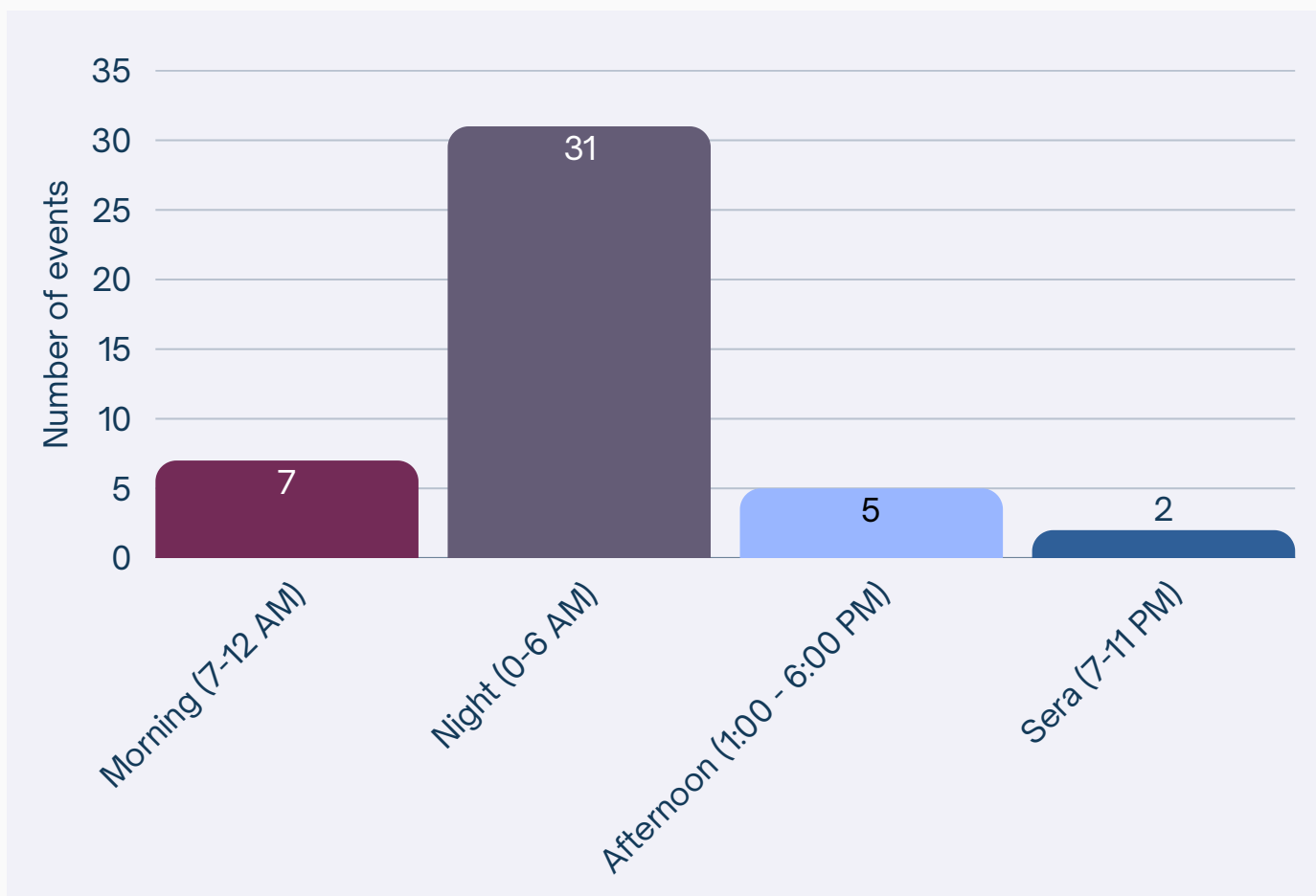
Criminal incidents categorized by type



A comprehensive analysis of the time intervals corresponding to the preceding graph.

This renders the data tangible, thereby enhancing the significance of nighttime hours.

Criminal incidents categorized by time slot



Operational management

Summary

The analysis conducted by the Secursat Team has enabled us to comprehend that 99% of the reports handled by the Secursat SOC within a year are contingent upon the technological and maintenance management of the systems, primarily categorized into four macro categories.



Line outages and
network
infrastructure
management



Technological
redundancy
(analog systems)



Inadequate systems
management
protocols

**WHAT ARE THE CAUSES
OF FALSE ALARMS AND
OPERATIONAL
WARNINGS?**



Technological oversight of
self-service areas
(financial services
industry)

The solutions

The strategies that enabled us to achieve these outcomes.

DATA ANALYSIS

No-code analytics dashboard platforms that integrate extensive data, prioritize insights, and enhance operational management.

Integration

Integration of all technologies into a cohesive platform, along with unified video management through the implementation of active management logic.

Remote oversight

Proactive remote management enhances operational efficiency and minimizes unnecessary on-site interventions.

Risk Assessment

Comprehensive risk assessment of our clients' locations to determine priorities and timeframes.

Video Analysis

Advanced video analysis of cameras positioned near ATMs in the banking sector, utilizing integrated AI and machine learning solutions.

Conclusions

The document seeks to offer a preliminary overview of the strategic positioning of the security model established by Secursat, while also identifying new areas for enhancement and focus to facilitate active data analysis and further investigate predictive techniques, in light of the ongoing optimization of the risk management processes employed by the company.

Over the years, Secursat has invested in two UNI CEI EN 50518:2020 certified Security Operation Centers featuring a remote infrastructure, including a Tier IV Data Center. This investment has led to the formation of multifunctional teams comprised of UNI 10459:2017 certified Security Managers and security experts, capable of assisting companies across diverse sectors in establishing security governance and predictive analytics models.

Thank you for your attention!

Thank you for dedicating your time to review this report. Should you have any inquiries or desire further information on enhancing your security processes, please feel free to reach out to us.

 **Corso Monforte 36, 20122, Milan**

 **0141 33000**

 **comunicazione@secursat.com**

 **www.secursat.it**